



# Polyrey Facades

Exterior Compact for Cladding

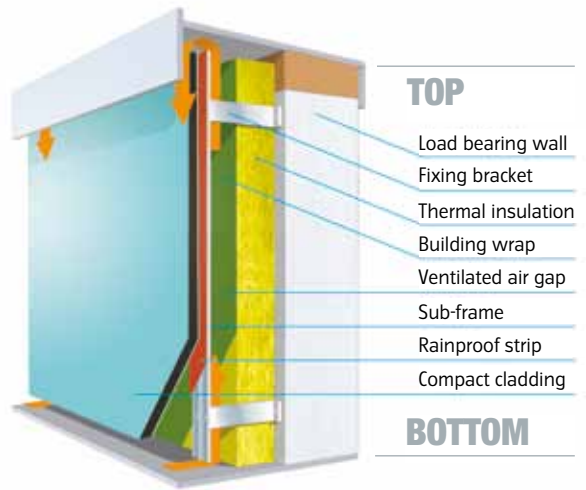
Exterior design, interior comfort

## Thermal inertia A major topic

### Ventilated facades: The perfect answer



- Our ventilated facade system allow the implementation of an **external thermal insulation** thanks to the ventilated air gap between this insulation and the cladding.
- The exterior thermal insulation together with the ventilated air shaft increases the general **thermal inertia** of the building, slowing down cooling and heating processes.
- **Heating and air-conditioning use will decrease**, helping reducing CO2 emissions.  
Our ventilated Facades perfectly fit within the low-energy building policy: decreasing energy consumption is one of the thermal regulations' main targets.
- Polyrey prepares for the future: tests carried out on Polyrey Facades Exterior Grade Compact are adapted to thick insulator layers in order to **meet thermal regulaton standards and higher**.



### Ventilated Facade: Sustainable and economical

The **watertight** ventilated facade efficiently protects the framework from rain and adverse weather.

It creates a **healthy environment inside** as the ventilated air shaft quickly dispels humidity or excessive heat from the building. It helps to **preserve the fabric of the building**, and thus its value.

Moreover, the **living space will not be reduced** after refurbishment (compared with the use of interior insulation).

**Building costs control:** The solutions are easy to quantify (construction, framework and wood panelling) and facilitate good management of the project schedule.

Polyrey Facades Exterior Grade Compact has been tested and validated by the French Institute CSTB (Scientific and Technical Centre for Building) for this construction type. The ventilated facade offers excellent properties in relation to wind and shock resistance. It consists of two technical evaluations on visible attachments; one for wood frameworks and one for metal frameworks.

# for exterior thermal insulation

## Exterior compact and sustainability



Polyrey Facades Exterior Grade Compact is the perfect panelling solution in order to obtain a HQE label for your project and if you want to control environmental impact. The combination of the ventilated Facade with Polyrey Facades Exterior Compact contributes to comply with certain requirements of HQE certification.

### ● Eco-building targets

Polyrey Facades is designed to minimise environmental impacts during the entire manufacturing production process of the product. The **Environmental and Sanitary Declaration Sheets (FDES)** guarantee the environmental qualities of this material.

Polyrey Facades Exterior Grade Compact decors allow buildings to **blend in with their immediate surroundings** by offering woodgrains and plain colours in very natural shades.

### ● Eco-management targets

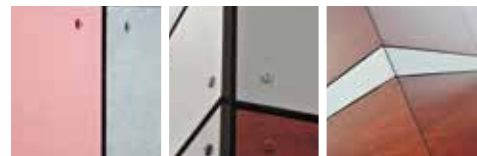
Thermal performances of the building are optimized thanks to the ventilated facade system and Polyrey Facades Exterior Compact with its excellent thermal resistance. Consequently **energy consumption decreases**.

### ● Ergonomic targets

Ventilation of the Facade quickly removes excess humidity and therefore improves **hygrothermal comfort**.

## Futureproof product

- *Polyrey Facades Exterior Grade compact does not contain pentachlorophenol, asbestos, halogens or heavy metals.*
- *Waste disposal: the high combustion heat values of the Polyrey Facades Exterior Grade Compact's waste generate energy through incineration (at 700°C) in certified Waste-to-Energy plants.*



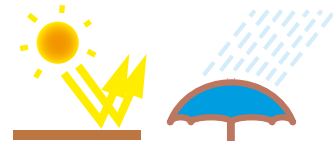
## Polyrey is an eco-responsible French company.

Committed to the cause of environmental protection, Polyrey has carried out a voluntary policy for several years, **aspiring to reduce the environmental impact of its activity**: reducing water and energy consumption in its two factories, controlling, reducing and recycling waste, ISO 14001 certification, PEFC certification on all boards.\*

\* All our compact are at least 30% product mix certified.

# Polyrey Facades, a quality solution

## Exterior Grade Compact High Performance Level



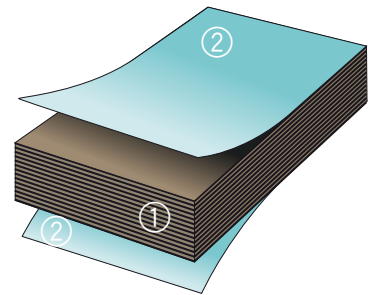
**Resistant and sustainable, easy to machine and to install, offering numerous decorative possibilities; the Polyrey Facades Exterior Grade Compact is the ideal cover solution for ventilated Facades.**

### Exceptional resistance

- The  **durable**  nature of Polyrey Facades means that it does not deteriorate over time, even under extreme climatic conditions. The surfaces maintain integrity over time.  
Wear tests on Polyrey Facades obtain the highest level of the EN 438-6 standards for exterior grade compact: UV resistant (1500h) and resistant to artificial bad weather exposure (3000h).
- **Water repellent and rot proof**, this material suits any external environment. It is resistant to water, steam, mould, decaying, frost and heat.
- It is very **solid**, shock and wear resistant. The high density of the material offers high resistance to sheering. Its rigid nature prevents distortion due to excessive wind.

### Easy maintenance

Polyrey Facades is **very low maintenance**: its surface is free from bumps and is not porous, dirt cannot penetrate. Polyrey Facades Exterior Grade Compact can be easily cleaned with water and soap using a soft sponge or fabric. **Never scrub if the surface is dry.**  
It is recommended to test any new detergent before use.



- ① Phenolic core: a quantity of Kraft sheets impregnated with phenolic resin.
- ② Decorative paper sheets with surface protection for external use.

### Easy and quick installation

The choice of a visible fixing system combined with machining of the boards on-site, optimises time and cost savings during the installation process



- **Polyrey Facades is an excellent decorative alternative to wood.** We offer a large collection of woodgrain decors with consistent, homogeneous decorative quality for all boards that will not deteriorate over time. Our solution is more economic, more sustainable and requires minimal maintenance.
- **A guarantee of quality:** All characteristics of Polyrey Facades Exterior Grade Compact have been optimized and tested in order to meet the EN 438-6 standards. Moreover, Polyrey has over 40 years of know-how and expertise in the field of manufacturing solid grade laminate (Compact).

# for all your ventilated facades



## A complete offer suited to your projects

### ● Optimise your budget

- **3 board sizes** available to maximise optimisation and minimise waste. Due to the large sheet sizes available you can design your Facade without restrictions.
- **2 thicknesses** available (8 and 10 mm) to meet your needs.  
The 10 mm board in particular is more resistant, especially to strong winds.

### ● A range of 28 decors to choose from

Polyrey Facade decors enable buildings to blend in with their surroundings and their use is particularly adapted to the needs of cladding for modern buildings: shopping centres, office blocks, cultural centres, industrial buildings, schools or commercial buildings...

### ● 2 Grades to suit all building types

Polyrey Facades Exterior Grade Compact has a fire rating of C-s1, do and can be used to clad buildings with public access (ERP), public housing...  
A B-s1,do rating is also available on request.

Polyrey Facades' strong resistance to external conditions is also useful for cladding, signage, gates and garden sheds...

### Characteristics of the range of Polyrey Facades

Sheet sizes	307 x 124 cm = 3,80 m <sup>2</sup> 260 x 185 cm = 4,81 m <sup>2</sup> 366 x 151 cm = 5,52 m <sup>2</sup>
Thickness	8 and 10 mm
Decors	28 decors same decor both sides
Finish	Satin finish (FA)
Fire ratings	C-s1, do B-s1, do on request
Standards	EN 438-6 and 7 (EDF/EDS rough use) CE



# Our Service Pledge

- **Reactivity:**
  - **Stocks available** with our distributing partners
  - **Reactive factories** with a product availability within 3 weeks
- **Short, reliable delivery times for on schedule building sites**
  - Short and reliable manufacturing times guarantee a continuous production without flow interruption on the construction site
  - You can be sure that our commercial distribution network offers easy and quick access to our products
- **Quick response to all your questions** thanks to our strong local presence
- Our **technical team** is at your service for technical support on building sites
- An **express samples service** to support your projects on a day-to-day basis
- For all your technical questions, please email : **[facades@polyrey.com](mailto:facades@polyrey.com)**



# Decors selection

Discover the ideal decorative range with its **WIDE CHOICE of 28 trendy decors** for Facades of multi-family buildings, office blocks, shopping centres or commercial buildings...

**Red, brown or grey WOODS, plain decors with NATURAL colours and impressions of RAW MATERIALS** such as brushed aluminium or rusted metals. **Let your creativity talk.**

All decors are available in boards of 307 x 124 cm - 260 x 185 cm - 366 x 151 cm and 2 thicknesses: 8 and 10 mm

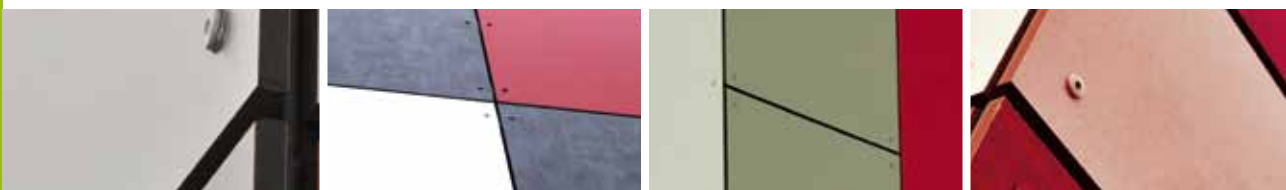
Plain colours	
Code	Decor
A 069	Argile
B 110	Beige Poudré
B 015	Blanc Menuires
B 111	Bleu Outremer
C 017	Coquille d'Œuf
F 006	Fer
G 015	Glaise
G 021	Gris Ardoise
G 020	Gris Ciment
G 044	Gris Dauphin
N 029	Noir de Jais
P 001	Pierre de Lune
R 006	Rouge Passion
R 010	Rouge Tomette
V 022	Vert Lichen

Woodgrains	
Code	Decor
B 112	Bois Cuivré
C 005	Chêne du Perche
C 042	Chêne d'Armor
E 036	Erable Naturel
E 048	Etimoë Rouge
P 020	Palissandre
P 014	Pin Grisé
P 036	Platane Rouge
N 007	Noyer Grisé
Metals	
Code	Decor
A 086	Acier Brossé
A 058	Acier Oxydé
C 034	Cuivre Oxydé
Z 003	Zinc Oxydé

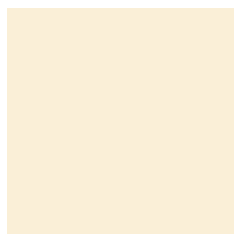
Some decors from the Polyrey Facades Exterior Grade Compact range are available in compact Interior Grade and in HPL.

Please contact us for information about minimum order quantities and delivery times.

All major suppliers (Etanco, SFS or similar) offer fixing systems to match our decor range.



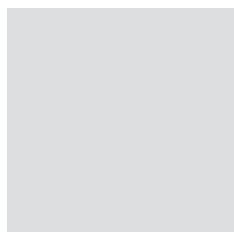
## Plain colours



**C 017** Coquille d'Œuf



**B 110** Beige Poudré



**G 044** Gris Dauphin



**G 015** Glaise



**R 010** Rouge Tomette



**A 069** Argile



**V 022** Vert Lichen



**P 001** Pierre de Lune



**F 006** Fer



**G 021** Gris Ardoise



**G 020** Gris Ciment



**B 111** Bleu Outremer



**R 006** Rouge Passion



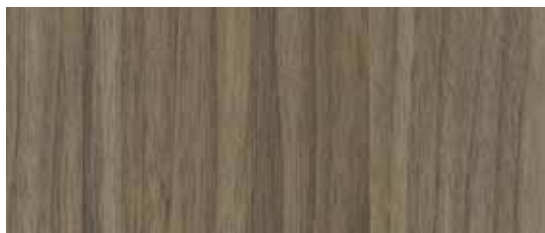
**N 029** Noir de Jais



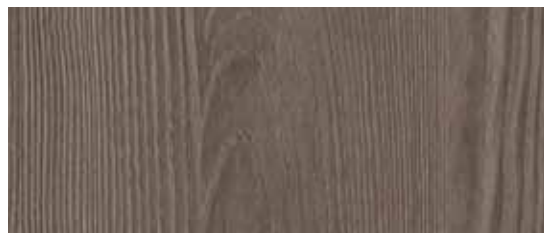
**B 015** Blanc Menuires



# Woodgrains and Metals



**N 007** Noyer Gris 



**P 014** Pin Gris 



**P 020** Palissandre



**E 048** Etimoe Rouge



**C 005** Ch ne du Perche



**E 036** Erable Naturel



**B 112** Bois Cuivr 



**P 036** Platane Rouge



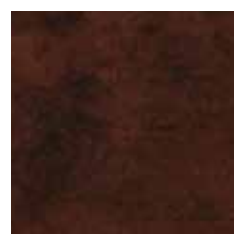
**C 042** Ch ne d'Armor



**A 086** Acier Bross 



**A 058** Acier Oxyd 



**C 034** Cuivre Oxyd 



**Z 003** Zinc Oxyd 

# Technical performances

● EDS/EDF wear resistance tests (rough use) on the exterior compact rank it at the highest level of the applicable EN 438-6 standards.

● CE Mark

<b>Polyrey Facades</b> <b>Exterior Compact for Cladding</b>	Grade		Standard	FR
	Finish		Satin Finish FA	
	Thickness (mm)		8 - 10	
	Type		EDS	EDF
	Standard	Scale Unit		
<b>Wear resistance</b>				
<b>UV Resistance (1500h)</b> Contrast Aspect	EN 438-2-28	Greyscale value Class (From 1 to 5)	≥ 3 ≥ 4	≥ 3 ≥ 4
<b>Resistance to artificial wear conditions (3000h)</b> Contrast Aspect	EN 438-2-29	Greyscale value Class (From 1 to 5)	≥ 3 ≥ 4	≥ 3 ≥ 4
<b>Resistance to damp atmosphere (48h at 65°C)</b> Mass increase Aspect	EN 438-2-15	% Class (From 1 to 5)	≤ 5 ≥ 4	≤ 5 ≥ 4
<b>Resistance to climatic shock</b> Aspect Flex resistance factor (Ds) Flex module (Dm)	EN 438-2-19	Class (From 1 to 5)	≥ 4 ≥ 0,95 ≥ 0,95	≥ 4 ≥ 0,95 ≥ 0,95
<b>Mechanical resistance</b>				
<b>Impact resistance with a large diameter marble (42,8mm and 324g)</b>	EN 438-2-21	Height of fall in mm	≥ 1800	≥ 1800
<b>Modules elasticity</b>	EN ISO 178:2003	M Pa	≥ 9000	≥ 9000
<b>Elasticity resistance</b>	EN ISO 178:2003	M Pa	≥ 80	≥ 80
<b>Tensile strength</b>	EN ISO 527-2:1996	M Pa	≥ 60	≥ 60
<b>Dimensional characteristics</b>				
<b>Density</b>	EN ISO 1183-1:2004	g/cm <sup>3</sup>	≥ 1,35	≥ 1,35
<b>Thickness tolerance</b> Thicknesses 8 and 10 mm	EN 438-2-5	mm	± 0,50	± 0,50
<b>Length and width tolerance</b>	EN 438-2-6	mm	- 0 / + 10	- 0 / + 10
<b>Edge straightness tolerance</b>	EN 438-2-7	mm/m	≤ 1,5	≤ 1,5
<b>Squareness tolerance</b>	EN 438-2-8	mm/m	≤ 1,5	≤ 1,5
<b>Flatness tolerance</b> Thickness 8 mm Thickness 10 mm	EN 438-2-9	mm/m mm/m	≤ 5,0 ≤ 3,0	≤ 5,0 ≤ 3,0
<b>Dimensional stability to high temperatures (70°C and 40°C with a 90-95% dampness)</b> Longitudinal direction Transverse direction	EN 438-2-17	% %	≤ 0,30 ≤ 0,60	≤ 0,30 ≤ 0,60
<b>Other characteristics</b>				
<b>Formaldehyde emission</b>	EN 717-1/2	Class	E1	E1
<b>Thermal conductivity</b>	EN 12524	W/mK	0,3	0,3
<b>Fire resistance</b>				
<b>Standard Euroclass</b>	EN 13501-1		C-s1,do	B-s1,do

# 10 years warranty



- Polyrey facade exterior compact for cladding is certified consistent with the CSTB's requirements and meets EN 438-6/7 norm.
- Wear tests realised following the method described in the EN ISO 4892-2/3 with an UV and bad weather exposure of 1500h and 3000h, guarantee the durability of the Polyrey Facade Panels.
- **10 year warranty** for performances and aesthetic:
  - Decorative surface homogeneous and uniform in time\*
  - Dimensional stability of the panels, in variable hygrometrical conditions
  - Constant mechanic and fire resistance

Polyrey will only guarantee the quality of the Polyrey Facades Exterior Grade Compact if installed as described in the recommendations of the technical guide. Polyrey can not guarantee the material should faults occur during the machining or installation phases.

\* Following the EN 438-6 norm requirements



# Polyrey

24150 Baneuil

Tél. : (+33) 05 53 73 56 88

e-mail : [polyrey.export@polyrey.com](mailto:polyrey.export@polyrey.com)

Internet : [www.polyrey.com](http://www.polyrey.com)



Samples ordered before 3pm are dispatched the same day.

Polyrey makes every effort to assure you the receipt of your samples within 48 hours.

